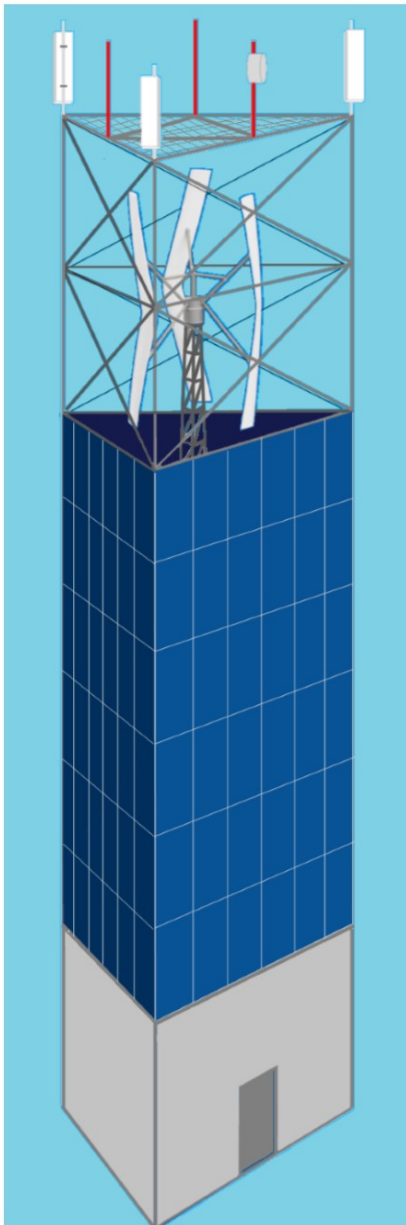
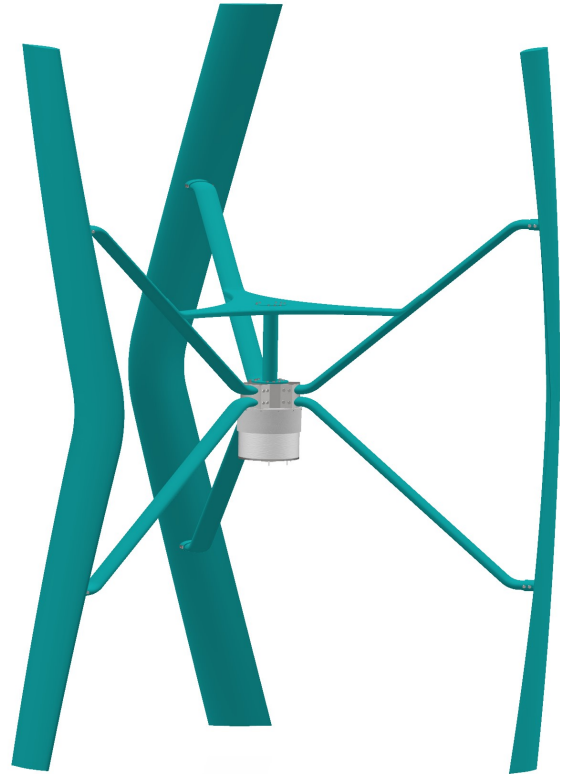


**ESTREYA Lx Hybrid ICEMG Product line**

Simple, rugged, powerful, elegant, direct drive, safety system, on 18m lattice tower

Lx35 Nominal Power : 3.5 kW @ 12m/s  
 Installed (peak) power : 5.5 kW  
 Operational : 5 to 17 m/s (>60 km/h)

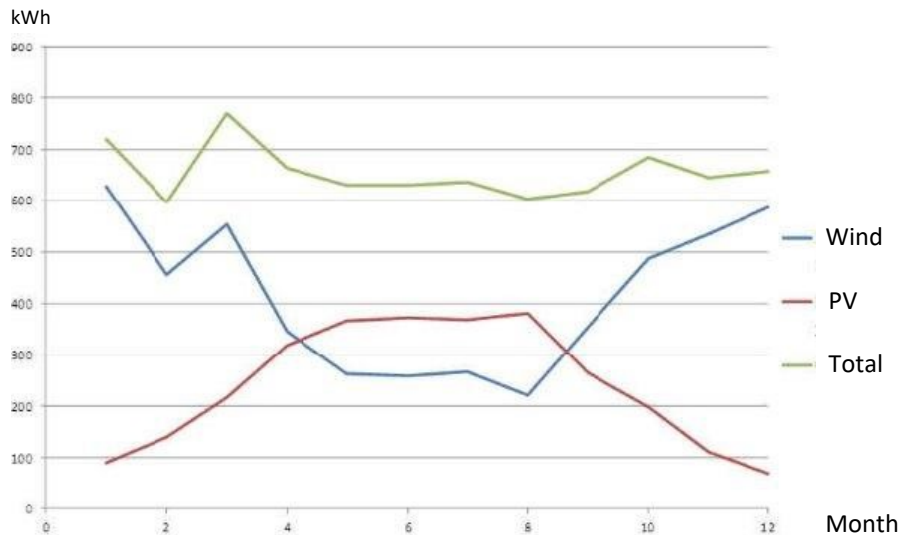
Production, site dependent:  
 Lx 35 : 6'000 to 9'000 kWh / year



IEC 61400-2 Certified power curve and noise level, including machine learning

**ICEMG with vertical PV configuration:**

SWIRL IP for ESTREYA Hybrid ICEMG  
 Cleaner in snowy & dusty conditions  
 Higher kWh/year/site, PV: 10 to 50kWp  
 Less Capex & Opex plus better LCOE / ROI



Advantage of hybrid ICEMG