

ESTREYA Lx Hybrid ICEMG Product line

Simple, rugged, powerful, elegant, direct drive, safety system, on 18m lattice tower

Lx25 Nominal Power : 2.5kW @ 12m/s

Lx35 Nominal Power : 3.5 kW @ 12m/s

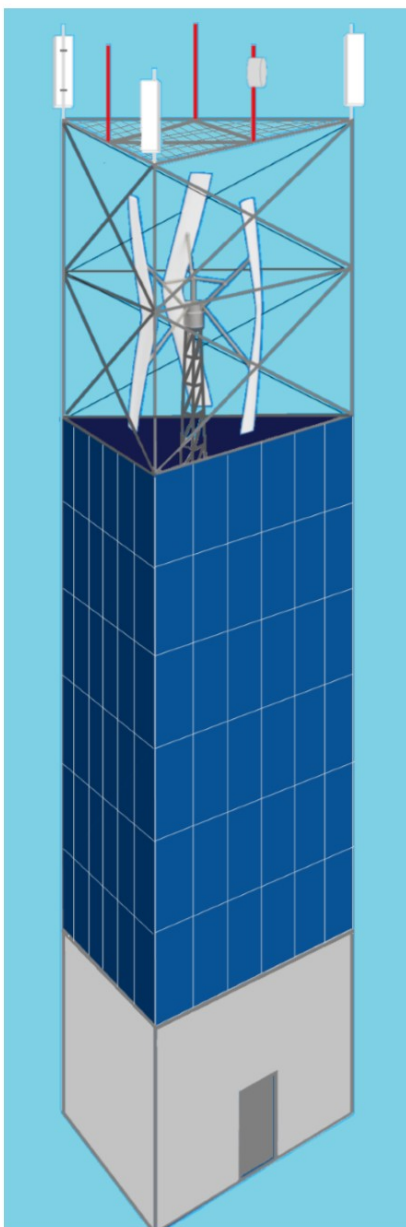
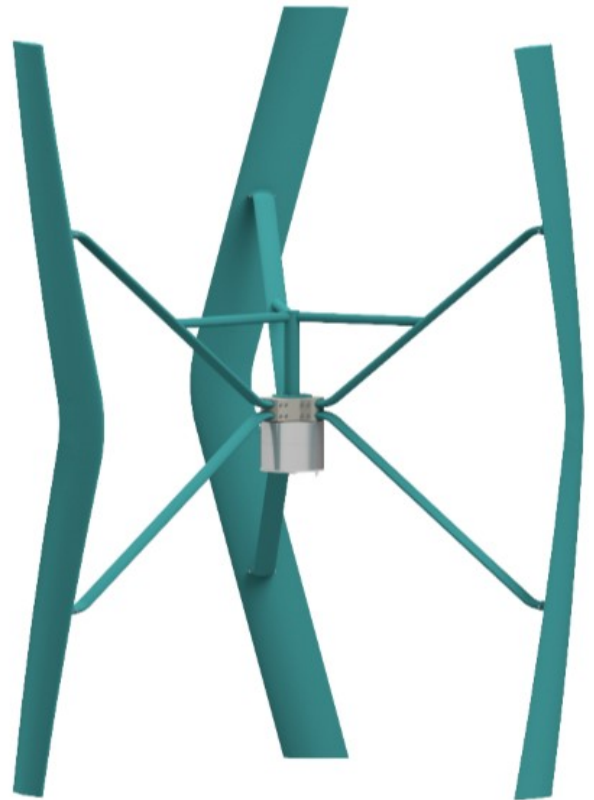
Installed (peak) power : 5.5 kW

Operational : 5 to 17 m/s (>60 km/h)

Production, site dependent:

Lx 25 : 4'000 to 6'000 kWh / year

Lx 35 : 6'000 to 9'000 kWh / year



IEC 61400-2 Certified power curve and noise level, including machine learning

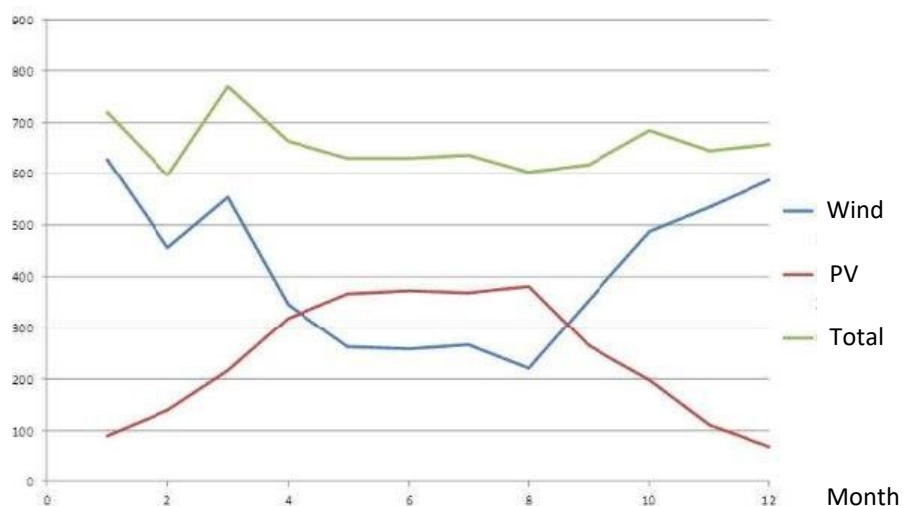
ICEMG with vertical PV configuration:

SWIRL IP for ESTREYA Hybrid ICEMG

Cleaner in snowy & dusty conditions

Higher kWh/year/site, PV: 10 to 50kWp

Less Capex & Opex plus better LCOE / ROI



Advantage of hybrid ICEMG